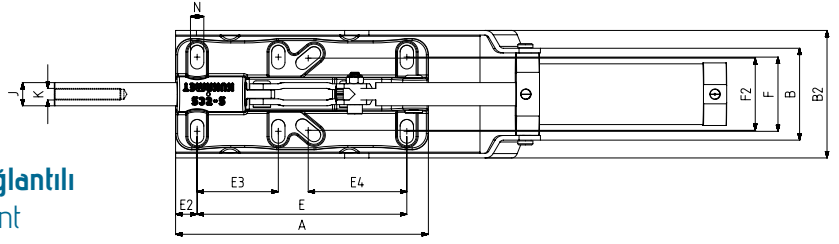
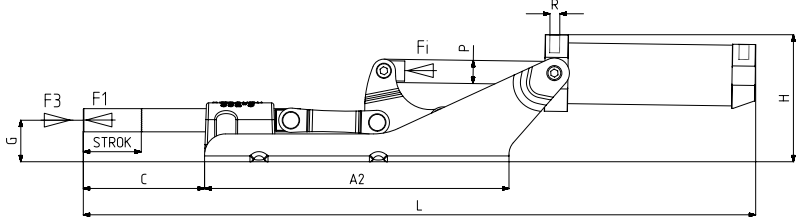


672



MODEL NO	F1 (N)	F3 (N)	Fİ (N)	Vn (dm <sup>3</sup> )	STROK	AĞIRLIK (WEIGHT) (gr)	BAR
672 - 5 (Ø 20)	7500	18450	1100	2	95	5260	6
F1 : BASKI KUVVETİ ( EXERTING FORCE ) , F3 : TUTMA KAPASİTESİ ( HOLDING CAPACITY ) , Fİ : UYGULAMA KUVVETİ ( APPLIED FORCE )							
Vn , 6 BAR BASINÇTA ÇİFT HAREKET İÇİN HAVA TÜKETİM MİKTARIDIR ( Vn , AIR CONSUMPTION PER DOUBLE STROKE IN dm <sup>3</sup> AT 6 BAR )							



**Ayak Tipi: Yatay Tabanlı, Döküm Gövdeli, Ön Bağlantılı**  
Body Mounting Base: Horizontal, Casting, Tied Front



641  
Sayfa/Page: 70

621  
Sayfa/Page: 68

532  
Sayfa/Page: 56

MODEL NO	A	A2	B	B2	C	E ~	E2 ~	E3 ~	E4 ~	F ~	F2 ~	G	H	J	K	L	N	P	R	PİSTON Ø
672 - 5 (Ø 20)	218	262,5	79	110	105	180,5	18,5	70	80 - 90	55-73	54-70,5	36	110	20	M12	578	11,5x20,5	Ø 20	G1/8	50



**Pistonlar çift etkili, manyetik ve yastıklıdır.**  
Pneumatic cylinders are double acting, magnetic and cushioning.