

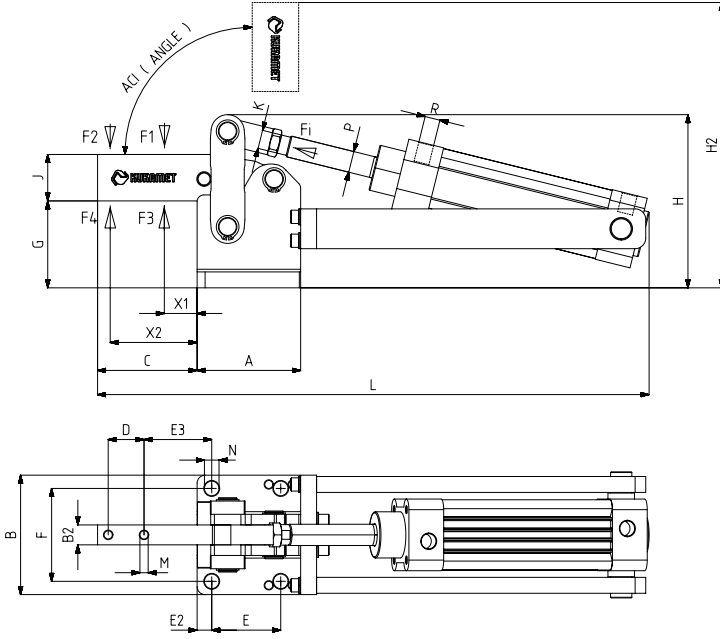
681



| MODEL NO | F1 (N) | F2 (N) | F3 (N) | F4 (N) | Fİ (N) | Vn (dm <sup>3</sup> ) | AÇI (ANGLE) (± 5 °) | AĞIRLIK (WEIGHT) (gr) | BAR |
|----------|--------|--------|--------|--------|--------|-----------------------|---------------------|-----------------------|-----|
| 681 - 4  | 2500   | 1800   | 9000   | 6000   | 750    | 1.28                  | 90°                 | 5565                  | 6   |
| 681 - 6  | 4000   | 2400   | 18000  | 12000  | 1150   | 2.5                   | 90°                 | 9660                  | 6   |
| 681 - 8  | 6500   | 4000   | 30000  | 20000  | 1850   | 5.13                  | 90°                 | 20475                 | 6   |

F1 - F2 : BASKI KUVVETİ ( EXERTING FORCE ) , F3 - F4 : TUTMA KAPASİTESİ ( HOLDING CAPACITY ) , Fİ : UYGULAMA KUVVETİ ( APPLIED FORCE )

Vn , 6 BAR BASINÇTA ÇİFT HAREKET İÇİN HAVA TÜKETİM MİKTARIDIR ( Vn , AIR CONSUMPTION PER DOUBLE STROKE IN dm<sup>3</sup> AT 6 BAR )



**Ayak Tipi: Yatay Tabanlı**  
Body Mounting Base: Horizontal

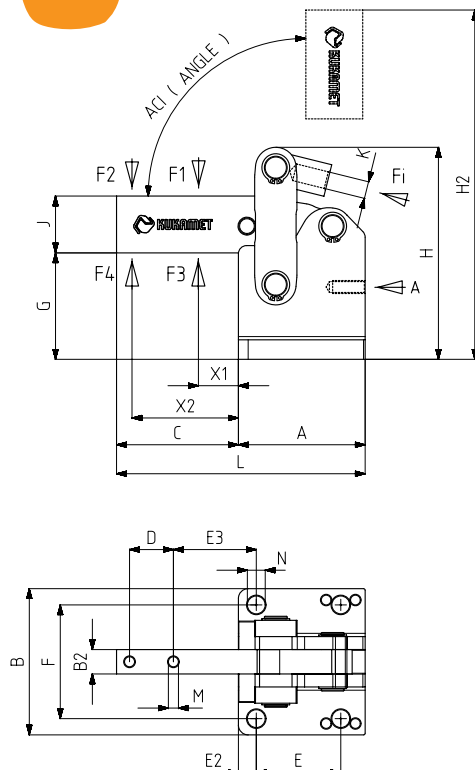
**Pistonlar çift etkili, manyetik ve yastıklıdır.**  
Pneumatic cylinders are double acting, magnetic and cushioning



681-M Sayfa/Page: 79    682 Sayfa/Page: 80    6031 Sayfa/Page: 110

| MODEL NO | A   | B   | B2 | C   | D  | E ~ | E2 ~ | E3 ~ | F ~ | G    | H   | H2  | J  | K        | L   | M    | N    | X1 | X2 | P    | R    | PİSTON Ø | PİSTON STROK |
|----------|-----|-----|----|-----|----|-----|------|------|-----|------|-----|-----|----|----------|-----|------|------|----|----|------|------|----------|--------------|
| 681 - 4  | 77  | 90  | 15 | 75  | 27 | 52  | 10   | 47   | 70  | 65,5 | 131 | 216 | 35 | M12X1,25 | 416 | 6,2  | 11   | 18 | 64 | Ø 16 | G1/4 | 40       | 80           |
| 681 - 6  | 93  | 105 | 20 | 85  | 26 | 55  | 11   | 54   | 83  | 71   | 158 | 249 | 40 | M16X1,50 | 483 | 8,2  | 12,5 | 18 | 69 | Ø 20 | G1/4 | 50       | 100          |
| 681 - 8  | 125 | 145 | 30 | 115 | 40 | 80  | 15   | 67   | 115 | 94   | 212 | 336 | 60 | M16X1,50 | 594 | 12,2 | 16,5 | 18 | 92 | Ø 20 | G3/8 | 63       | 125          |

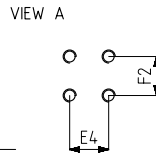
681-M



| MODEL NO | F1 (N) | F2 (N) | F3 (N) | F4 (N) | Fİ (N) | Vn (dm <sup>3</sup> ) | AÇI (ANGLE) (± 5 °) | AĞIRLIK (WEIGHT) (gr) | BAR |
|----------|--------|--------|--------|--------|--------|-----------------------|---------------------|-----------------------|-----|
| 681-4-M  | 2500   | 1800   | 9000   | 6000   | 750    | 1,28                  | 90°                 | 2800                  | 6   |
| 681-6-M  | 4000   | 2400   | 18000  | 12000  | 1150   | 2,5                   | 90°                 | 4600                  | 6   |
| 681-8-M  | 6500   | 4000   | 30000  | 20000  | 1850   | 5,13                  | 90°                 | 11300                 | 6   |

F1 - F2 : BASKI KUVVETİ ( EXERTING FORCE ) , F3 - F4 : TUTMA KAPASİTESİ ( HOLDING CAPACITY ) , Fİ : UYGULAMA KUVVETİ ( APPLIED FORCE )

Vn , 6 BAR BASINÇTA ÇİFT HAREKET İÇİN HAVA TÜKETİM MİKTARIDIR ( Vn , AIR CONSUMPTION PER DOUBLE STROKE IN dm<sup>3</sup> AT 6 BAR )



**Ayak Tipi: Yatay Tabanlı**  
Body Mounting Base: Horizontal



681 Sayfa/Page: 79    252 Sayfa/Page: 35

| MODEL NO | A   | B   | B2 | C   | D  | E ~ | E2 ~ | E3 ~ | E4 ~ | F ~ | F2 ~ | G    | H   | H2    | J  | K        | L   | M    | N    | X1 | X2 | P  | R    | PİSTON Ø | PİSTON STROK |
|----------|-----|-----|----|-----|----|-----|------|------|------|-----|------|------|-----|-------|----|----------|-----|------|------|----|----|----|------|----------|--------------|
| 681-4-M  | 77  | 90  | 15 | 75  | 27 | 52  | 10   | 47   | 18   | 70  |      | 65,5 | 131 | 215,5 | 35 | M12X1,25 | 152 | 6,2  | 11   | 18 | 64 | 16 | G1/4 | 40       | 80           |
| 681-6-M  | 93  | 105 | 20 | 85  | 26 | 55  | 11   | 54   | 24   | 83  | 24   | 71   | 158 | 249   | 40 | M16X1,50 | 178 | 8,2  | 12,5 | 18 | 69 | 20 | G1/4 | 50       | 100          |
| 681-8-M  | 125 | 145 | 30 | 115 | 40 | 80  | 15   | 67   | 34   | 115 | 40   | 94   | 212 | 336   | 60 | M16X1,50 | 240 | 12,2 | 16,5 | 18 | 92 | 20 | G3/8 | 63       | 125          |