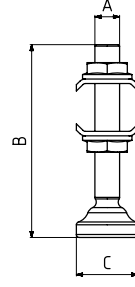


915

Metal Sabit Uç PATENT NO: 20100115

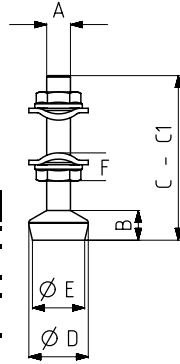
Fixed Metal Squeeze Part



MODEL NO	AĞIRLIK (WEIGHT) (gr)	A	B	C
915 - 1	8	M5	43	Ø14
915 - 2	15	M6	53,5	Ø16
915 - 3	53	M8	64,5	Ø20
915 - 4	105	M10	86	Ø25
915 - 5	182	M12	98	Ø30

916

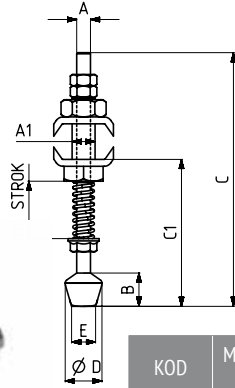
Silikon Uç
Silicon Squeeze Part



KOD	MODEL NO	PASLANMAZ (STAINLESS)	SİYAH (BLACK)	AĞIRLIK (WEIGHT) (gr)	A CIVATA DIN 933 (SCREW DIN 933)	B	C	D	E	F
150 - 324	916 - 0	S 916 -	B 916 -	6	M4 x 25	5	29	10	9	6
150 - 526	916 - 0 - C1	S 916 -	B 916 -	10	M4 x 60	5	63,9	10	9	6
150 - 263	916 - 1	S 916 -	B 916 -	16	M 5 x 35	7	40	12	10	7
150 - 588	916 - 1 - C1	S 916 -	B 916 -	16	M 5 x 60	7	65	12	10	7
150 - 264	916 - 2	S 916 -	B 916 -	23	M 6 x 40	10	46	16	13	8
150 - 265	916 - 3	S 916 -	B 916 -	46	M 8 x 50	12	57	20	16	10
150 - 266	916 - 4	S 916 -	B 916 -	98	M10 x 70	16	79	26	20	13
150 - 328	916 - 5		B 916 -	152	M12 x 80	19	91	30	24	15

917

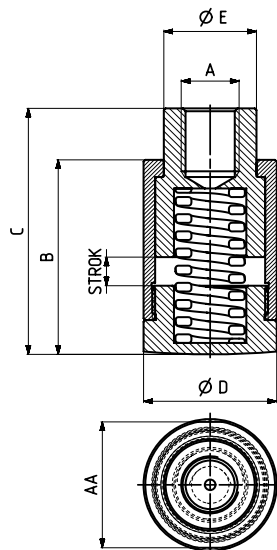
Çayılı Silikon Uç
Silicon Squeeze Part With Spring



KOD	MODEL NO	PASLANMAZ (STAINLESS)	SİYAH (BLACK)	YAY STROK	AĞIRLIK (WEIGHT) (gr)	A CIVATA DIN 933 (SCREW DIN 933)	A1	B	C	C1	D	E
150 - 545	917 - 3	S 917 -	B 917 -	8	37	M 5 x 60	M8	10,5	68,5	35,5	12,5	9
150 - 246	917 - 4	S 917 -	B 917 -	14	82	M 6 x 120	M10	14,5	130,5	55 - 93,5	16	10,5
150 - 283	917 - 5		B 917 -	19	140	M 8 x 130	M12	18	143	69-88	20	14

918

Çayılı Metal Uç
Metal Squeeze Part With Spring



MODEL NO	F1 (N)	STROK	AĞIRLIK (WEIGHT) (gr)	A	AA	B	C MİN. - MAX.	ØD	ØE
918 - 3	200	5	96	M8	22	34	38 - 43	23	16
918 - 4	250	5	93	M10	22	34	38 - 43	23	16
918 - 5	300	5	91	M12	22	34	38 - 43	23	16